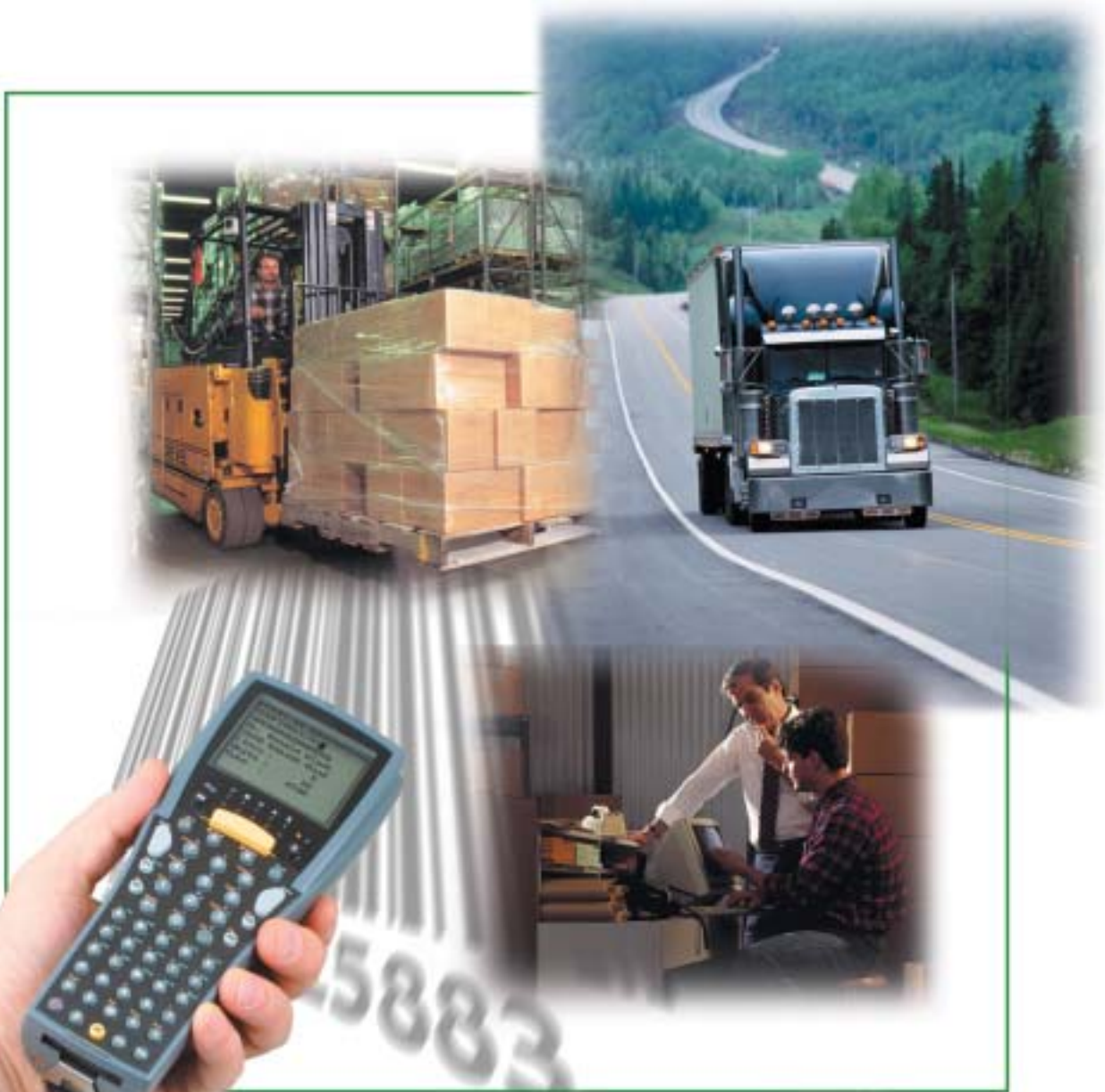


ACCPAC[®]

WMS

Warehouse Management System



PEAK
PERFORMANCE...



MAXIMUM
EFFICIENCY

Today, more than ever, companies must operate at maximum efficiency and provide superior service to ensure profitability. Your ability to effectively manage your warehouse, reduce costs and ensure smoothly run sales and fulfillment operations is critical to your success. From receiving inventory and timely order fulfillment, to automated validation of warehouse activities and accurate inventory control, your warehouse operating system must be designed to achieve peak performance across the enterprise.



ACCPAC Warehouse Management System™ (WMS) is a powerful, feature-rich solution for automating the materials-handling process of retailers, manufacturers, distributors and third-party logistics providers. By integrating advanced radio frequency and barcoding technologies with core warehousing functionality, ACCPAC WMS provides comprehensive fulfillment center and warehouse management, including order management, receiving, stocking, replenishment, picking and related warehouse tasks.

ACCPAC®

**Advanced Radio Frequency
Total Warehouse Management**

ACCPAC®

WMS PICKED, PACKED AND



ACCPAC WMS is a complete warehouse management solution specifically designed to increase inventory-handling accuracy, improve allocation of human resources within the warehouse and reduce carrying costs associated with obsolete and slow-moving stock. With WMS, you can efficiently pick, pack and ship orders—putting nearly 100 percent picking and shipping accuracy within reach.

SHIPPED...

NO PROBLEM!



ACCPAC WMS scales to accommodate the varied demands of small to highly complex, high-volume distribution centers and works as part of a complete ACCPAC Advantage Series™ or ACCPAC Pro Series™ end-to-end e-business solution. By integrating radio-frequency (RF) and barcoding technologies, shipping systems and other warehouse automation equipment with your ACCPAC® Order Entry, Inventory Control and Purchase Orders, WMS orchestrates the movement of personnel and inventory to allow multiple orders to be picked in a single pass by warehouse staff.

ACCPAC® WMS PICKING AND PACKING



If you operate like most warehouses, you need to focus on the primary task of accurate and timely fulfillment of customer orders. ACCPAC WMS offers you a powerful, feature-rich “picking and packing” solution. Leveraging RF-based barcoding technologies and seamless integration with ACCPAC Order Entry, WMS tightly orchestrates these activities within your warehouse, and helps you maximize human resources.

Order fulfillment is easy with ACCPAC WMS because it quickly matches available stock to the order, enabling the warehouse manager to see at a glance which orders can be filled immediately. Equipped with RF-based handheld computers, your staff is given explicit direction for picking every order, including verifying “picks” by reading barcodes to confirm the product, quantity and shipping carton requirements. Your staff can even pick multiple orders during a single “walk” through the warehouse. From automatic generation of shipping labels, to indicating the right size box for the order, to guiding warehouse employees to the right location, you’re in complete control with WMS.

Whichever picking style works for your warehouse—wave, batch, simultaneous or sequential zone—WMS manages the process efficiently. Picking inventory in a warehouse that is managed by WMS means never “having to look for missing stock” or “walking around the warehouse” to fulfill customer orders.

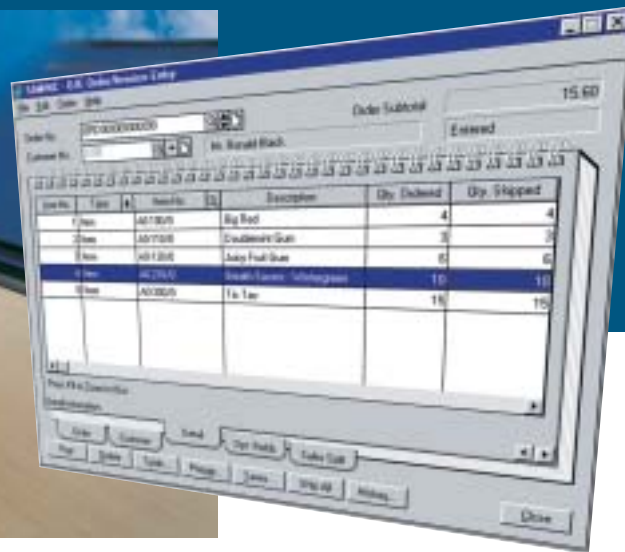


Orders are sent via radio-frequency to the warehouse floor from the WMS browser-based application for effective order fulfillment.

ACCPAC WMS offers you the ability to maximize the productivity of your warehouse staff. By maintaining detailed information on the flow of inventory from both “pick” and “overstock” locations, you can be assured that when your staff is directed to a specific bin, the item will be there. Requests to replenish pick bins may be managed during off-peak hours or coordinated to run simultaneously with picking activities without interruption.

ACCPAC® WMS SHIPPING

Your customers count on you to deliver the right product—on time. Sending the wrong package or items to a customer is more than just embarrassing, it drives up costs and may cost you a customer. In addition, it may cost your client great expense and downtime. Add to that the cost of compliance fines and violating service level agreements, and it's clear—the shipping dock is your last chance to ensure your shipments are perfect—every time. ACCPAC WMS eliminates these errors and helps you deliver the service excellence your customers deserve.



Once the order is fulfilled by the picker on the warehouse floor, a shipment confirmation is returned to ACCPAC Order Entry.

ACCPAC WMS offers a streamlined shipping solution that produces shipping labels, packing slips, carton content labels and advanced shipping notices, eliminating errors in transcription from customer orders. WMS also automatically estimates shipping weight based on the items in the order. When integrated with a multi-carrier shipping system, WMS offers you the ability to shop for the best shipping rate.

ACCPAC WMS saves on labor costs by significantly reducing the need for dedicated shippers and checkers, freeing warehouse personnel for other activities. Upon completing an order, shippers simply tape up the box and put it aside for the carrier. With WMS, you know exactly what's going out the door and can give your customers the immediate shipment information they need. Equally important, your ACCPAC Inventory Control and Order Entry modules are immediately updated—ensuring everyone across your organization, from your warehouse staff to your customer service department, complete access to all order shipment information.

ACCPAC® WMS RECEIVING AND PUT-AWAY

ACCPAC WMS receipt and put-away is about effectively moving goods from your receiving dock to your warehouse and into the right location. WMS is a total RF-based solution that effectively automates your inventory receipt and put-away processes, facilitating timely and accurate order fulfillment by creating an optimized order-picking environment for warehouse staff. Tightly integrated with your ACCPAC Purchase Orders module, WMS eliminates receiving errors by matching the receipt of goods through barcoding with original purchase order details and reports any variance.

Advanced radio-frequency and barcoding technology ensures accurate and timely inventory receipt and put-away.



ACCPAC WMS is designed to ensure a highly-efficient receiving environment and allows for greater control in the allocation of human resources, while eliminating the introduction of transcription errors. You can assign multiple employees to the receipt and put-away of large inbound shipments, or multiple receipts can be simultaneously checked-in by a single employee. WMS notifies warehouse staff if a received good is needed to fulfill a customer back order. In this event, instead of moving the item to inventory, it is prepared for shipping directly to the awaiting customer.

During put-away, ACCPAC WMS allows you to capture important information on the incoming items such as weight, size, expiration date and more. WMS can be configured to store products either in a default location or many locations throughout the warehouse—accelerating the put-away process. The final phase of receipt and put-away processing is the automated update of purchase orders and inventory information into your ACCPAC accounting system. This automation eliminates manual intervention and errors, while providing accurate and up-to-date inventory control.

ACCPAC® WMS INVENTORY CONTROL

ACCPAC WMS provides accurate and immediate information on the quantity, location, condition, status and history of any item in your warehouse—at any time. Fully integrated with ACCPAC Pro Series and ACCPAC Advantage Series, WMS ensures complete control and flow of information between your back office and warehouse floor. An easy-to-use browser-based interface provides the ability to generate reports and track inventory movement across your entire enterprise.



Real-time inventory information can be accessed through a familiar browser-based interface.

ACCPAC WMS gives you complete control over your inventory and offers you a clear picture of what is going on in your warehouse. This includes up-to-the-minute notification of when replenishment is needed, a full audit report of every product moved through your warehouse and automatic updates to your ACCPAC Inventory Control module. In addition, ACCPAC WMS dramatically improves the accuracy of physical inventory counting by date, product and bin location using advanced barcoding technology. With complete inventory control management—down to the contents of specific bins—you can increase productivity and save on warehouse labor costs. WMS supports “first in, first out” (FIFO) and “last in, first out” (LIFO) stock rotation, serialized inventory and lot and expiration-date tracking—ensuring you complete control over shipped product.

ACCPAC® WMS

END-TO-END

E-BUSINESS SOLUTIONS

ACCPAC advanced accounting solutions are the heart of our end-to-end e-business solutions—and your e-business success. With an ACCPAC accounting system as the engine that powers your e-business solution, you get single-source data, low-cost integration, flexible deployment options, ensured data integrity, advanced customization features and the security you need when doing business.

ACCPAC end-to-end e-business solutions are specifically designed to effectively extend business to the Web. Integrating powerful front-office e-business capabilities with back-office accounting and fulfillment, ACCPAC provides companies with the solutions they need to extend their brick and mortar businesses to the Internet quickly, affordably and successfully. From establishing a full-featured Web store, to processing orders with complete warehouse fulfillment or providing employees, customers and partners with real-time Web access to critical information, you can tap the full power of e-business with ACCPAC—when and where you choose.

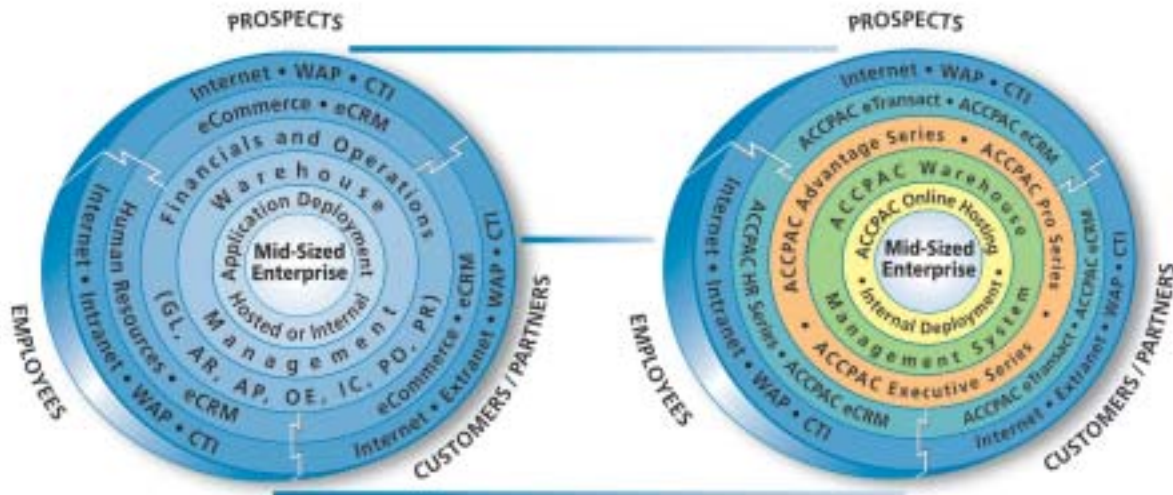
ACCPAC offers end-to-end e-business solutions in the following areas:

- Accounting and Operations
- Warehouse Management
- E-Commerce
- E-Customer Relationship Management
- Human Resource Management
- Hosted Applications Services

ACCPAC END-TO-END E-BUSINESS SOLUTIONS

Requirements

ACCPAC Solutions



ACCPAC empowers mid-market enterprises with a complete suite of end-to-end e-business solutions.

Visit ACCPAC at www.accpac.com or www.accpaconline.com for more information about ACCPAC end-to-end e-business solutions.

ACCPAC®

ACCPAC International, Inc.
6700 Koll Center Parkway
Third Floor
Pleasanton, CA 94566
800-873-7282
www.accpac.com
www.accpaonline.com

ACCPAC
online

Copyright ©2001 ACCPAC International, Inc. All Rights Reserved. ACCPAC, the ACCPAC logo, ACCPAC Advantage Series, ACCPAC Executive Series, ACCPAC Director Series, ACCPAC Pro Series, ACCPAC eTransact, ACCPAC eCRM, ACCPAC Warehouse Management System, ACCPAC HR Series and ACCPAC Online are registered trademarks or trademarks of ACCPAC International, Inc. or its affiliates in the United States and/or other countries. All other marks are registered trademarks or trademarks of their respective companies. eWare is a trademark of eWare Ltd. in the United States and/or other countries.

PB80001U0801

1202D